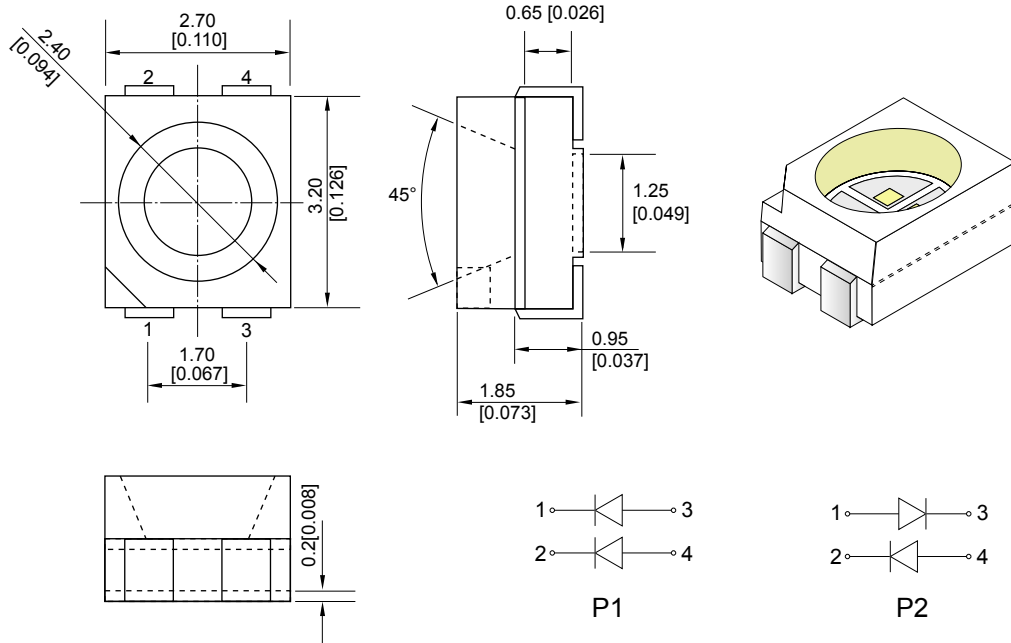
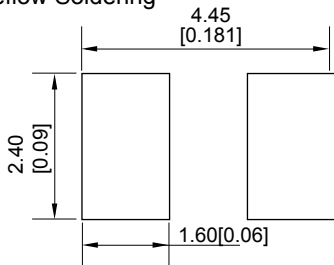


## LBD310FJC



### Recommended Soldering Pattern For Reflow Soldering



### NOTES:

1. All dimensions are in millimeters (inches);
2. Tolerances are  $\pm 0.2\text{mm}$  (0.008 inch) unless otherwise noted.

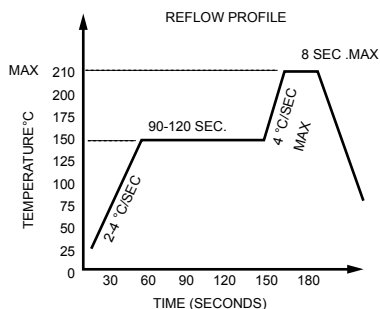
### Soldering iron:

Basic speed is  $< 5\text{sec}$  when  $260^\circ\text{C}$ . If temperature is higher, time should be shorter ( $+10^\circ\text{C} > -1\text{sec}$ ). Power dissipation of iron should be smaller than  $15\text{W}$ , and temperatures should be controllable. Surface temperature of the device should be under  $230^\circ\text{C}$ .

### SMD Chip LED Lamps

Part Number	Wave Length D (nm)	Emitting color	Lens Type	Vf(V)Typ	Iv(mcd)Typ	Viewing angle 2 1/2
				At 20mA		
KTD310FJC	620	Orange	Water Clear	2.00	120	120°
	570	Yellow Green		2.00	60	

### Recommended Reflow Soldering Profile.



### Directive Characteristics

