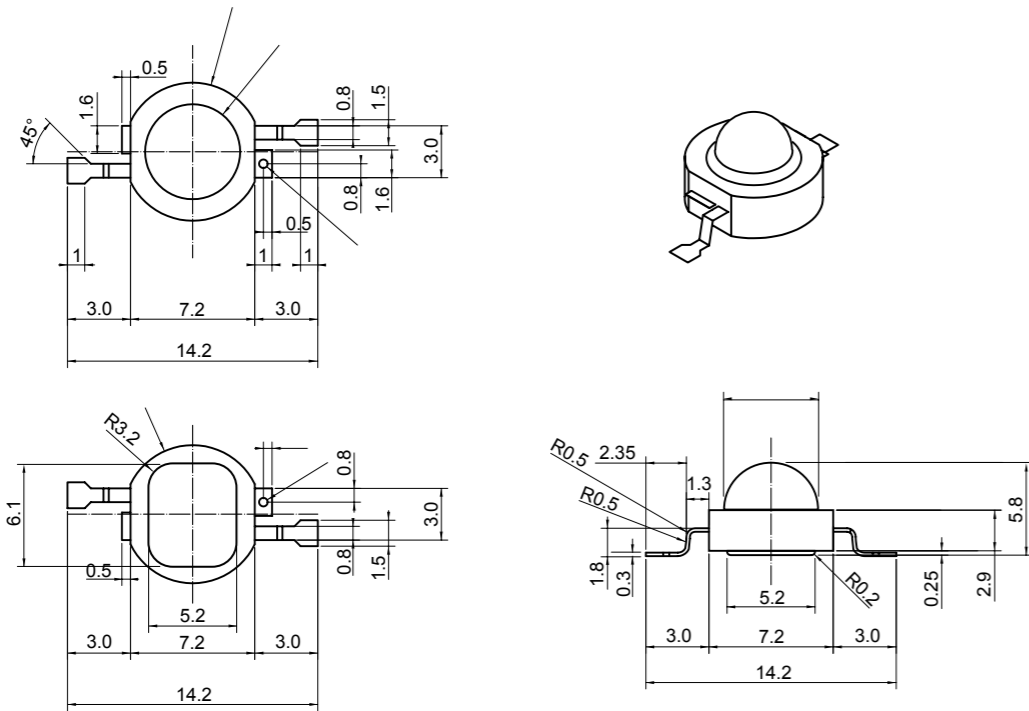


LightBo

1W POWER LED Emitter

LBW310



Features

- 1.Ultra - Luminance Using InGaN
- 2.High Forward Current Operation:180mA
- 3.High Thermal Conductivity

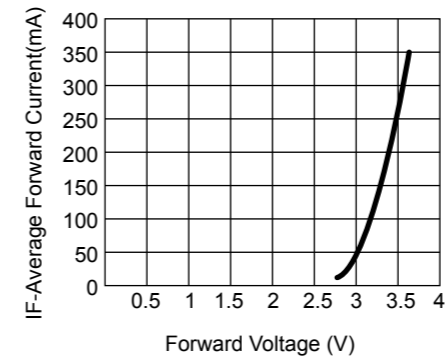
Application

- 1.Backlight
- 2.Indicator
- 3.Lighting

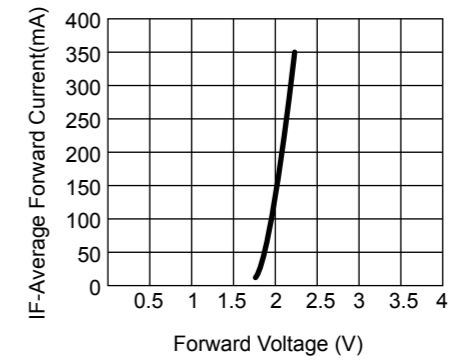
Part No.	Color	Wavelength	Power	Continuos Forward Current	Forward Voltage	Operating Temperature Range	Half Viewing Angle
		d	Watt	mA	If=180mA		2 1/2
KTW310R	Red	625nm	1w	180mA	1.8v-2.4v	-20°C to +80°C	60deg
KTW310Y	Amber	590nm	1w				
KTW310B	Blue	470nm	1w				
KTW310PG	Pure green	525nm	1w				
KTW310W	White	3000K-5000K	1w				
KTW310WW	Warm White	2500K-3500K	1w				

LightBo

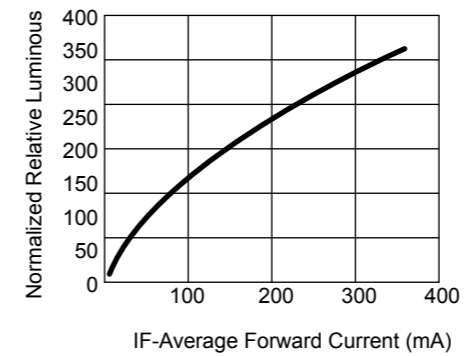
Forward Current Characteristics, Tj=25°C



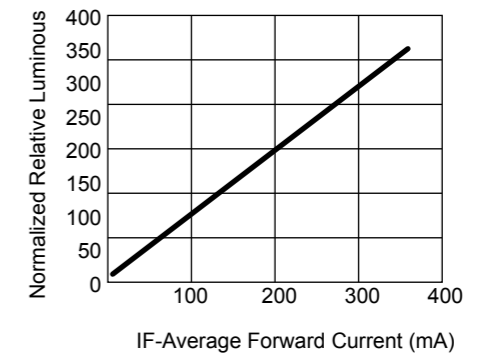
Forward Voltage (V)
Forward Voltage for White, Blue and Green.



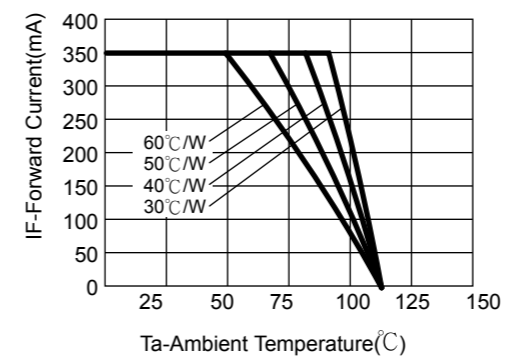
Forward Voltage (V)
Forward Voltage for Yellow and Red.



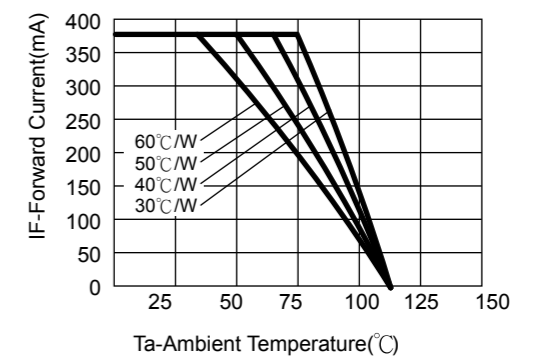
Relative Luminous Flux vs.
Forward Current for White, Blue and Green at Tj=25°C maintained.



Relative Luminous Flux vs.
Forward Current for Yellow and Red at Tj=25°C maintained.



Maximum Forward Current vs.
Ambient Temperature. Derating based on TjMAX=135 for White, Blue and Green.



Maximum Forward Current vs.
Ambient Temperature. Derating based on TjMAX=120 for Yellow and Red.